

**Tillbridge Solar Project  
EN010142**

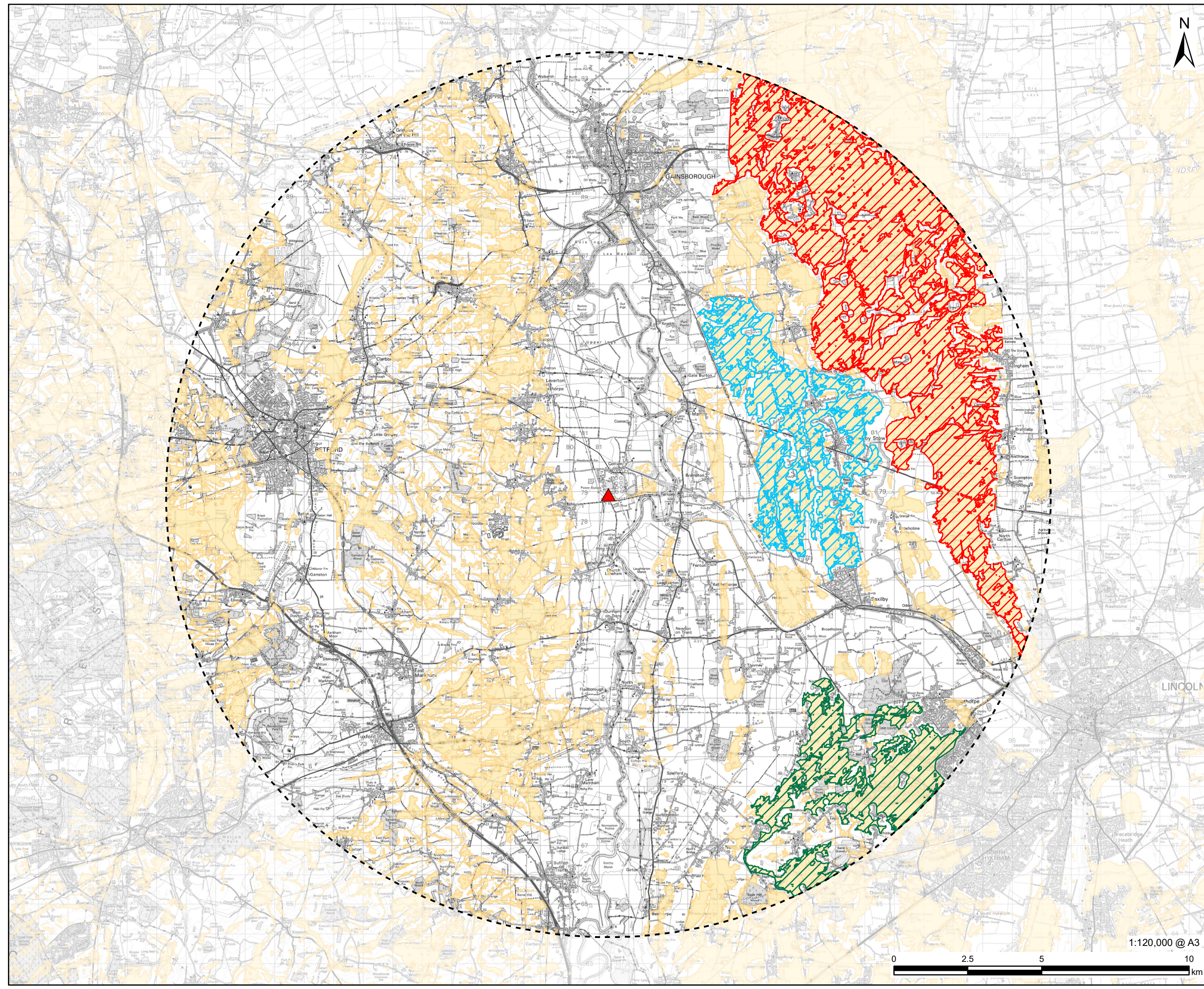
**Volume 6  
Environmental Statement  
Figure 4-3: Zones Suitable for Solar  
Development  
Document Reference: EN010142/APP/6.3**

**Regulation 5(2)(a)  
Infrastructure Planning (Applications: Prescribed Forms and  
Procedure) Regulations 2009**

**June 2024  
Revision Number: 01**

**tillbridgesolar.com**

Revision: 01 Drawn: LL Checked: CR Approved: CW Date: 2024-05-15  
Filename: I:\na.aecomnet.com\fs\EMEALondon-UK\LON06\Legacy\UK\LON06\PPSW001-V1\DP\GIS\_DATA\Projects\Greta III\Layout\Tillbridge Solar\ES\Chapter 4 - Design Evolution\240312\_TillbridgeSolar\_Alternatives\_Figure4-3\_DevelopmentZones.mxd



**AECOM**  
PROJECT  
Tillbridge Solar Project

CLIENT  
Tillbridge Solar Ltd

CONSULTANT  
Aldgate Tower  
2, Leman Street  
London, E1 8FA  
United Kingdom  
T +44-0207-645-2000

LEGEND  
▲ National Grid Cottam Substation  
--- 15km Search Area  
Unconstrained Area  
**Zone Boundary**  
Zone A  
Zone B  
Zone C

NOTES  
Reproduced from Ordnance Survey digital map data © Crown copyright 2024. All rights reserved. Licence number 0100031673.  
© Historic England 2023. Contains Ordnance Survey data © Crown copyright and database right 2023. The Historic England GIS Data contained in this material was obtained on 2023. The most publicly available up to date Historic England GIS Data can be obtained from HistoricEngland.org.uk.  
© Natural England copyright. Contains Ordnance Survey data © Crown copyright and database right 2023. © Environment Agency copyright and/or database right 2018. All rights reserved. Some features of this map are based on digital spatial data from the Centre for Ecology & Hydrology, © NERC (CEH), © Crown copyright and database rights 2018 Ordnance Survey 100024198.

ISSUE PURPOSE  
DCO Submission

PROJECT NUMBER  
60677969

FIGURE TITLE  
Potential Development Zones

FIGURE NUMBER  
Figure 4-3

The drawing has been prepared for the use of AECOM's client. It may not be used, modified, reproduced or relied upon by third parties, except as agreed by AECOM or as required by law. AECOM accepts no responsibility, and denies any liability whatsoever, to any party that uses or relies on this drawing without AECOM's express written consent. Do not scale this document. All measurements must be obtained from the stated dimensions.